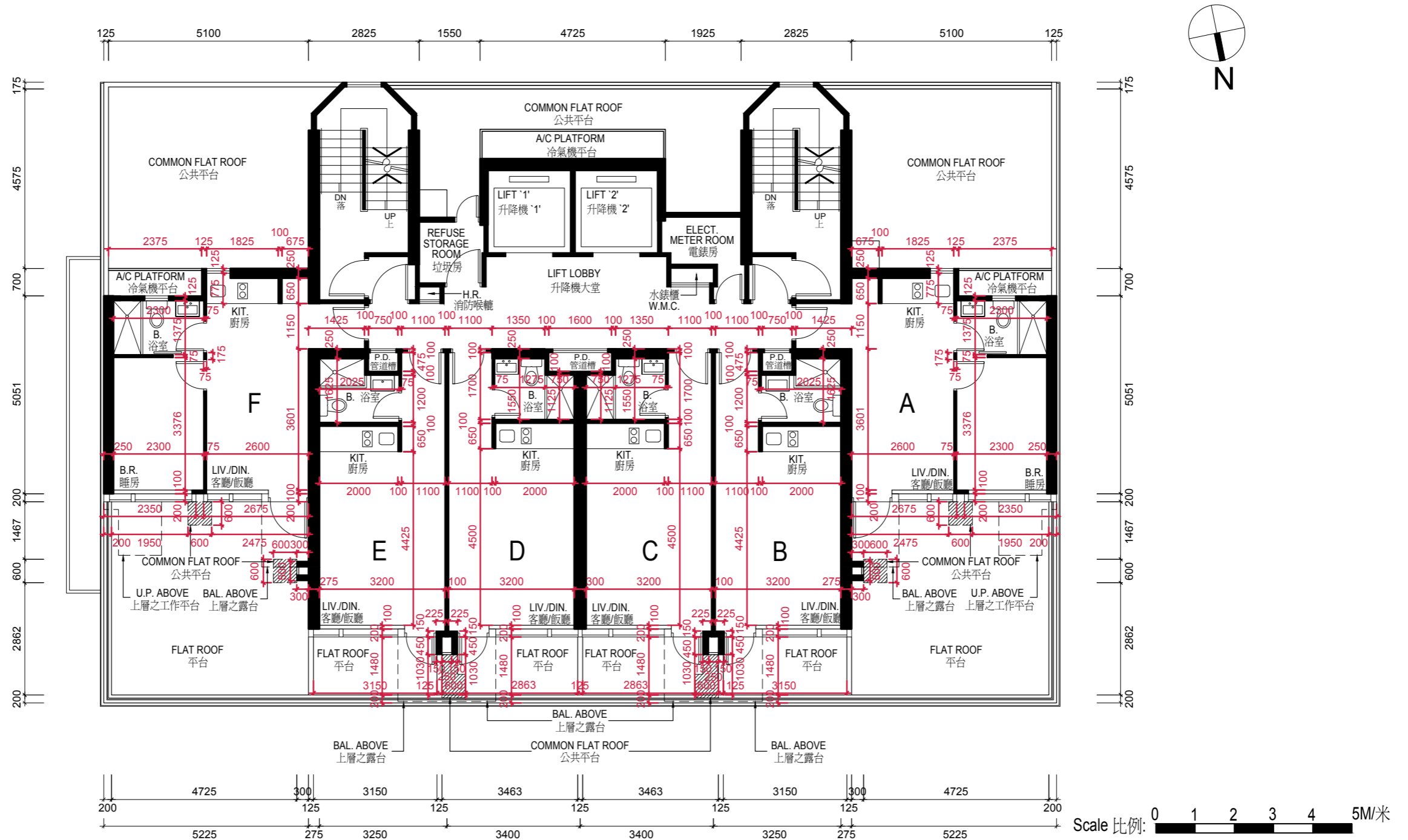


11

FLOOR PLANS OF RESIDENTIAL PROPERTIES IN THE DEVELOPMENT 發展項目的住宅物業的樓面平面圖

2/F FLOOR PLAN 二樓平面圖



1. The floor-to-floor height of each residential property on 2/F of the Development as provided in the approved building plans for the Development is 3.35m.
2. The thickness of floor slabs (excluding plaster) in each residential property on 2/F of the Development is 200mm and 600mm*.
3. The internal areas of the residential properties on the upper floors will generally be slightly larger than those on the lower floors because of the reducing thickness of the structural walls on the upper floors.

Notes: 1. Please refer to page 18 of this Sales Brochure for legend of terms and abbreviations shown in the floor plans.
2. *Denotes that the slab thickness includes 400mm thick concrete fill.

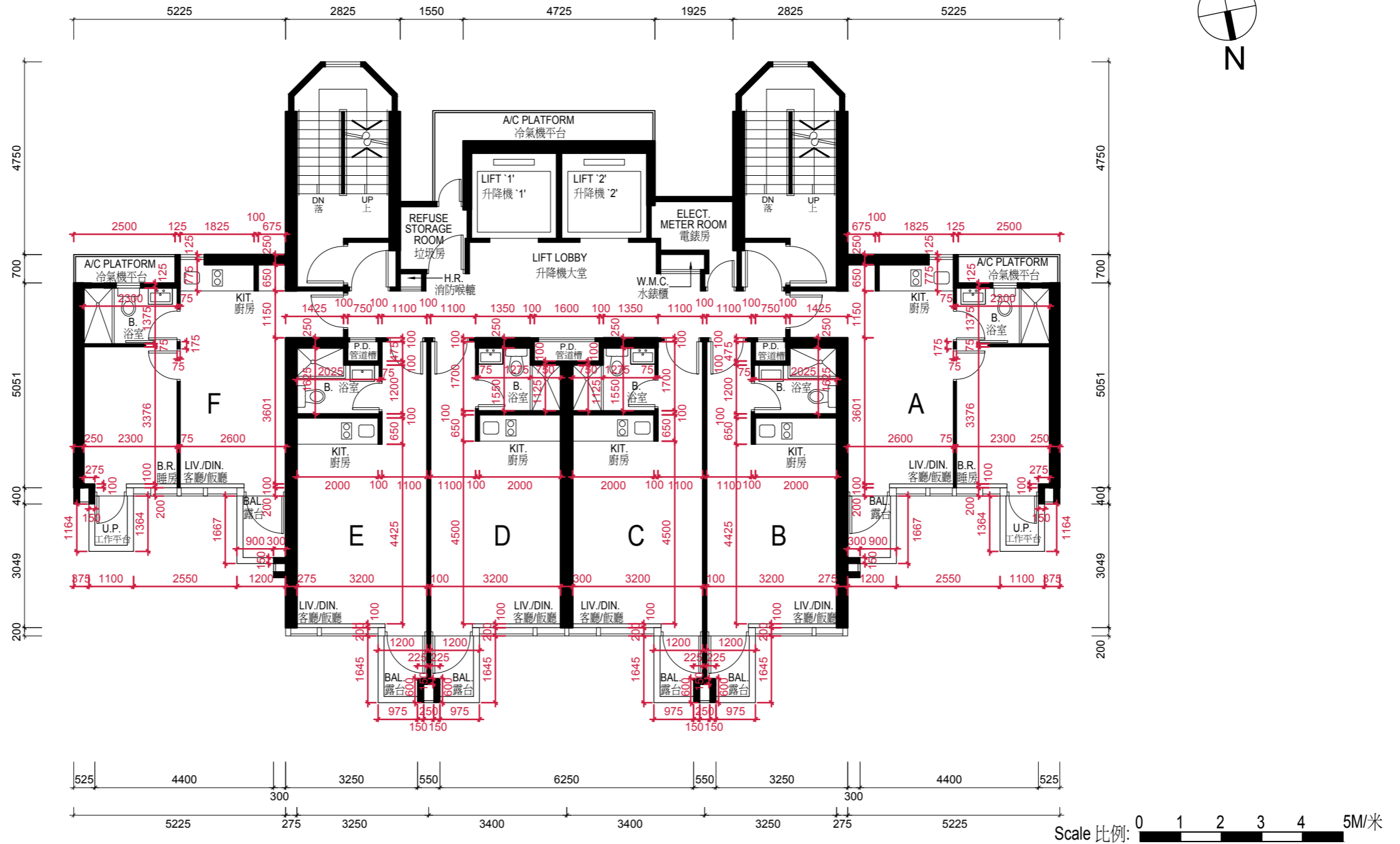
1. 按發展項目的經批准的建築圖則所規定者，發展項目二樓每個住宅物業的層與層之間的高度為3.35米。
2. 按發展項目的經批准的建築圖則所規定者，發展項目二樓每個住宅物業的樓板（不包括灰泥）的厚度為200毫米及600毫米*。
3. 因住宅物業的較高樓層的結構牆的厚度遞減，較高樓層的內部面積，一般比較低樓層的內部面積稍大。

備註: 1. 平面圖中所使用之名詞及簡稱請參閱本售樓說明書第18頁。
2. *標示該樓板的厚度包括400毫米的混凝土填料。

11

FLOOR PLANS OF RESIDENTIAL PROPERTIES IN THE DEVELOPMENT 發展項目的住宅物業的樓面平面圖

3/F, 5/F – 12/F, 15/F – 23/F, 25/F – 29/F FLOOR PLAN
三樓、五樓至十二樓、十五樓至二十三樓、二十五樓至二十九樓平面圖



1. The floor-to-floor height of each residential property on 3/F, 5/F to 12/F, 15/F to 23/F, 25/F to 28/F of the Development as provided in the approved building plans for the Development is 3.35m.
2. The floor-to-floor height of each residential property on 29/F of the Development as provided in the approved building plans for the Development is 3.50m.
3. The thickness of floor slabs (excluding plaster) in each residential property on 3/F, 5/F to 12/F, 15/F to 23/F, 25/F to 29/F of the Development as provided in the approved building plans for the Development is 175mm.
4. The internal areas of the residential properties on the upper floors will generally be slightly larger than those on the lower floors because of the reducing thickness of the structural walls on the upper floors.

1. 按發展項目的經批准的建築圖則所規定者，發展項目三樓、五樓至十二樓、十五樓至二十三樓、二十五樓至二十八樓每個住宅物業的層與層之間的高度為3.35米。
2. 按發展項目的經批准的建築圖則所規定者，發展項目二十九樓每個住宅物業的層與層之間的高度為3.50米。
3. 按發展項目的經批准的建築圖則所規定者，發展項目三樓、五樓至十二樓、十五樓至二十三樓、二十五樓至二十九樓每個住宅物業的樓板（不包括灰泥）的厚度為175毫米。
4. 因住宅物業的較高樓層的結構牆的厚度遞減，較高樓層的內部面積，一般比較低樓層的內部面積稍大。

備註: 1. 平面圖中所使用之名詞及簡稱請參閱本售樓說明書第18頁。

Notes: 1. Please refer to page 18 of this Sales Brochure for legend of terms and abbreviations shown in the floor plans.